

# HOW TO SPEAK LIKE AN EYE BANKER



## PREFERRED LANGUAGE AND TERMINOLOGY

### What is an Eye Bank?

An organization that recovers, evaluates, prepares, and distributes corneal tissue for transplant, research, and education.

### What is Authorization?

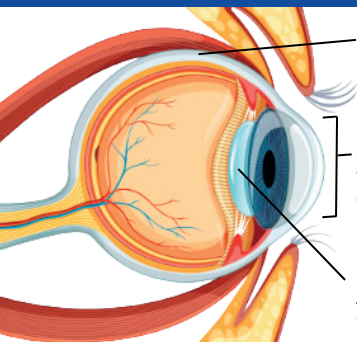
A family's decision following the death of their loved one.

### What is Consent?

Part of the Uniform Anatomical Gift Act, when a living person makes the decision to become a donor.

### What is a Processing Fee?

A fee required by the eye bank to cover the cost of recovery, analysis, and preparation of the tissue.



**Sclera**  
The white, outer, protective layer of the eye.

**Cornea**  
The clear front covering of the eye, consisting of 5 layers.

**Lens**  
A clear, curved ovoid at the front of the chamber of the eye, behind the pupil.

### ✓ PREFERRED TERMS

Recover or Procure  
Donors  
Deceased Donation  
Restoration  
Donation or Gifts  
Whole Eye  
Passed

### ✗ TERMS TO AVOID

Harvest  
Cadaver  
Cadaveric Donation  
Reconstruction  
Body Parts  
Globe  
Expire